



# Royal Liverpool Philharmonic Orchestra Emerging Musicians Fellowship 2025-26

## Application Pack



# What is Liverpool Philharmonic?

## **Liverpool Philharmonic enhances and transforms lives through music.**

At the heart of our work is the critically-acclaimed Royal Liverpool Philharmonic Orchestra (the UK's oldest) and Choir; an extensive programme of participatory work with young people and others across our community; and presentation of almost 400 diverse concerts and events each year at our home, Liverpool Philharmonic Hall.

## **Liverpool Philharmonic reaches more people than any music organisation outside London**

- Over 300,000 people attend Liverpool Philharmonic concerts each year.
- Around 100,000 participants of all ages attended Liverpool Philharmonic's music education and community engagement programmes last year. Over 800,000 people listen to our recordings each month on Spotify, more than any UK orchestra outside London.
- Over 21,500 people have benefitted from our Music and Health programme over the last 15 years.

## **Liverpool Philharmonic is rooted in our city**

We are central to Liverpool's cultural offering, being the largest music organisation and one of the largest cultural organisations in the city, employing over 290 people. As well as our work in Liverpool, our Orchestra represents the city with performances and broadcasts across the UK and around the world.

The city's young people are a central focus of our work. Our In Harmony programme provides an intensive, daily music-making programme for over 1500 children in Everton and Anfield, North Liverpool, and we run more than 5,000 workshops and events in community settings for all ages across the city. Liverpool Philharmonic Youth Company provides a range of opportunities for music-making for young people, including the Liverpool Philharmonic Youth Orchestra, Liverpool Philharmonic Youth Choir, Children's Choirs, and Rushworth Young Composers programme.

Our Music and Health Programme works in partnership with NHS Trusts, including Mersey Care NHS Foundation Trust, Clatterbridge Cancer Centre NHS Foundation Trust, The Walton Centre NHS Foundation Trust, Alder Hey Children's Hospital NHS Foundation Trust and Improving Me; using music to benefit health and wellbeing. The Music and Health programme has been running continuously since 2008 and has worked to benefit over 21,500 individuals across the Liverpool City Region.

## **Liverpool Philharmonic is committed to diversity and inclusion**

We work hard to reach right across our community through our learning work and concert programme.

We attract world class artists to perform at Liverpool Philharmonic Hall and our smaller venue, Music Room, with a diverse programme ranging from classical, contemporary, rock, pop, folk, roots, and jazz to comedy, film and spoken word. We work with many organisations and cultural partners in the city to ensure that the artists and performances we put on stage, and the audiences we attract, truly represent our community.

And we are working hard to ensure that our workforce is as diverse as possible.

## **What is the Emerging Musicians Fellowship?**

**A paid musician development opportunity, offering early-career orchestral musicians an immersive experience of professional orchestral life, on and off the concert platform.**

### **What is the opportunity?**

In the 2025-26 season, four Fellowship Musicians will be welcomed into the Royal Liverpool Philharmonic Orchestra, undertaking five patches of work. The structure of the patches includes inductions, rehearsals, performances, training (musical and non-musical) and education work, spread across a season. Fellowship Musicians will rehearse and perform alongside Royal Liverpool Philharmonic Orchestra musicians as part of the orchestral schedule for three intensive weeks.

This paid opportunity will culminate in a final wrap week including an exit audition (to join our regular extras list, or for ongoing development), an intimate chamber performance programmed and performed alongside other Fellowship Musicians, and sessions around ongoing musical and professional development. The wrap week is also an opportunity to welcome the next cohort of Fellowship Musicians to the programme and grow the Alumni network.



## Fellowship Musicians will:

- Be partnered with a mentor from the Royal Liverpool Philharmonic Orchestra, paired up by shared musical interests and development goals. They will meet regularly throughout the season for guidance and support in their growth, both on and off the platform.
- Receive five instrumental lessons with a musician from the Orchestra to develop their skills as an instrumentalist and an orchestral musician.
- Receive tailor-made training based on their aims outside of orchestral performance, as well as increasing understanding of orchestral life.
- Attend training on topics such as how to do a successful audition, how to liaise with orchestra managers, how to present/improve CVs, orchestral etiquette and how to manage a portfolio career.
- Have full access to the Liverpool Philharmonic Musicians Performance and Wellbeing Programme, including physiotherapy, sports massage, injury prevention screening, audiology, and performance psychology.
- Gain practical experience across Liverpool Philharmonic, including within the Learning and Participation programme. Fellowship Musicians can also build knowledge in various areas of the organisation, for example the library, marketing, programming and fundraising.
- Become ambassadors of the Fellowship, representing Liverpool Philharmonic at a community, local, and national level during and after their Fellowship.
- Be involved in welcoming the 2026-27 cohort of Fellowship Musicians.
- Help in the ongoing evaluation of the Fellowship through meetings with Mentors, Fellowship Lead Musicians, and other Liverpool Philharmonic staff.



### **Domingo Hindoyan, Chief Conductor of the Royal Liverpool Philharmonic Orchestra**

*“I have seen first-hand how vital the Fellowship is in supporting emerging musicians who are progressing into professional orchestral life and providing them with invaluable experience.”*

## Eligibility Criteria – what are we looking for?

We are recruiting for four Fellowship Musicians, limited in 2025-26 to the following instruments:

- **Strings:** Cello, Double Bass
- **Woodwind:** Oboe, Cor Anglais, Clarinet, Eb Clarinet, Bass Clarinet
- **Brass:** Trombone, Bass Trombone, Tuba
- **Harp**

We are looking for Fellowship Musicians who commit to our four values:

- Are striving towards **excellence** in their playing.
- **Ensemble** – are a team player, and able and willing to immerse themselves within Liverpool Philharmonic and all that we do.
- **Welcoming** – will be an ambassador for Liverpool Philharmonic in our communities, within the sector, and to future Fellowship Musicians.
- Must be able to demonstrate a desire for learning, personal development and a **passion for music**.

The programme is targeted at emerging orchestral musicians who are performing at the standard required to play in a professional orchestra, and *may* include those who are:

- in part- or full-time higher education with commitment to pursue orchestral music performance
- recently out of higher education but not yet established in an orchestral career
- considering a career change/move into orchestral work
- yet to establish an orchestral career

If you have had multiple trials or extensive professional extra work, this may not be the opportunity for you. This will be assessed in your Round 1 Application.

**Applicants should be aged 18+ on 24 September 2025. There is no upper age limit.**

Applicants must be able to demonstrate the right to work in the UK, and proof of this will be required prior to confirmation of places on the Fellowship.



## What is the time commitment?

The cohort of four Fellowship Musicians will attend a two-day induction in Liverpool on **25-26 September 2025**. Fellowship Musicians can request to receive an additional travel contribution and will receive contribution towards accommodation. Musicians must be available for these dates to undertake the Fellowship.

- There will then be three week-long patches spread between October 2025 and July 2026. These weeks will include a busy schedule of training, rehearsal and performance, so Fellowship Musicians will need to be fully available during these periods.
- We also ask that you make time ahead of the patches to practise your parts in order to get the most from the experience.
- The year will culminate in a three-day wrap week towards the end of July 2026, which will include the chamber performance.



Dates of the three patches and wrap week will be confirmed at the point of offer. Fellowship Musicians will be expected to commit to all dates in order to accept the place.

## Positive Action

We acknowledge that our Orchestra and our industry is not fully reflective of the diverse society in which we live. Therefore, at Round 1, we are taking Positive Action to prioritise applications from emerging musicians from backgrounds that are currently underrepresented in UK orchestras.

Applicants will be asked to complete Equal Opportunities information as part of the application form. The information gathered on this form will be used to identify those with protected characteristics that are currently underrepresented in UK orchestras.

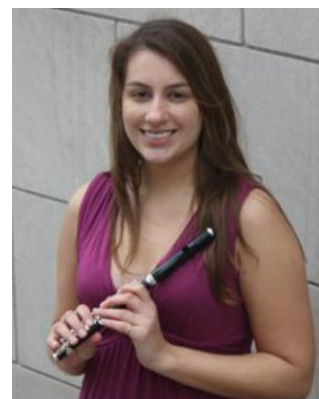
Where applicants declare a protected characteristic (race, gender, socio-economic status, disability, or sexual orientation) **and** meet all the required criteria at Round 1 (including performance and supplementary criteria), they will be guaranteed a live audition in Round 2.

## **Sameeta Gahir, Principal Piccolo, Royal Liverpool Philharmonic Orchestra and Lead Musician for the Emerging Musicians Fellowship**

*“We are proud to be inspiring and encouraging the next generation of orchestral players through our Emerging Musicians Fellowship.*

*We particularly welcome applications from musicians whose backgrounds are currently underrepresented in professional UK orchestras. Crucially, there is no upper age limit on applicants, so we can attract the widest pool of musicians possible.*

*The Fellowship has been designed to help those who may struggle for whatever reason to kick-start their orchestral playing career. If you can play to the standard required in a professional orchestra and you’ll be aged 18 or above by 24 September 2025, we would encourage you to apply.”*



## **Ian Fair, Viola, Royal Liverpool Philharmonic Orchestra and Lead Musician for the Emerging Musicians Fellowship**



*Having personally benefited from similar programmes early in my career, I am a strong advocate for the Emerging Musicians' Fellowship.*

*Our goal is to support musicians from all backgrounds, helping them advance on their musical journey. One aspect of the program that I'm particularly passionate about is our commitment to providing feedback at every stage of the process. Therefore even if you're not selected as a fellow, we hope you'll gain valuable insights from the experience of applying.*

*For those who are selected, we offer a fully immersive experience with the Liverpool Philharmonic. During your time with us, you'll participate in orchestral rehearsals and concerts, receive lessons and mentoring, and have the opportunity to engage in educational work, hopefully ensuring you make the most of your fellowship here in Liverpool.*

# What is the recruitment process?

## Round 1 – Application form and video audition

Candidates can apply in two simple steps:

- Record a video of your audition as per the guidelines listed below. Upload videos onto YouTube and share links with us on the application form. This video must have been recorded in the past 6 months.
- Complete an online application form. There is the option to do this on video if that is preferred.

All Audition Requirements are available on our website. At Round 1, your audition will include orchestral excerpts and a section or movement from a piece of standard solo repertoire (unaccompanied).

## Round 2 - Live auditions

If you are successful in your initial application and audition in Round 1, you will be invited to attend a live audition in Liverpool. Applicants will need to be available between 10am – 4pm on the audition day. Live auditions will include an individual audition plus a group workshop or sectional with musicians from the Royal Liverpool Philharmonic Orchestra. Provisional dates for these are as follows:

- **Monday 14 April 2025 (Strings)**
- **Tuesday 15 April 2025 (Woodwind)**
- **Wednesday 16 April 2025 (Harp & Woodwind)**
- **Thursday 17 April 2025 (Brass)**

We will provide a travel contribution of up to £50 for each candidate attending Round 2 live auditions.

All Audition Requirements are available to download on our website. Round 2 auditions will include individual excerpts and solo repertoire, as well as excerpts to be played alongside Royal Liverpool Philharmonic Orchestra musicians.



# How to Apply (Round 1)

## Step 1 - Video Audition

Please record a video of your audition in accordance with the Audition Requirements for your chosen instrument. All Audition Requirements are available on our website.

### Submission guidelines

- Your video recording must be performed 'as live' in one continuous take.
- Your video recording must be unedited.
- Your video recording must be recorded on a mobile phone.
- Your video must have been recorded in the past 6 months.
- Repertoire must be performed in the specified order.
- Candidates must not speak during the recording.
- Your video recording should be landscape and you and your instrument should be face on and central to the camera.
- Where possible, recordings should be made **approximately 2-3m** from the recording device.
- The panel will only hear the audio of your submission.
- Your video recording is a private submission and will only be listened to by the panel.



### How to upload your digital submission

Please upload your video recording for pre-selection via YouTube. For instructions on how to upload your videos to YouTube, please see the links below:

[\(24\) How to upload videos with YouTube Studio \(Desktop\) - YouTube](#)

[Further information on how to upload videos with YouTube studio](#)

Once uploaded, please name your video using the following format:

**Name - instrument**

To ensure your video is not public and cannot be seen by anyone that does not have the link, please select the option 'Unlisted' from the 'Visibility' list.

Please paste the URL link into your application form so the Audition Panel can view your video submission. Videos submitted using any other method will not be considered.

If you want to apply for more than one instrument combination and be considered separately for each (e.g. a separate application for **Oboe** and **Cor Anglais with Oboe**), please submit two completely separate applications and follow the audition requirements for each one. These will be considered as separate applications.

**Please do not attach more than one video audition to one application form, as only one will be considered.**

## Step 2 - Application Form

Please click [here](#) to complete your application form.

In addition to the key information we require, you will be asked the following questions which you may like to consider before starting the application form:

- Please tell us about your orchestral experience to date. This should include whether you have undertaken any professional trials (providing details of where and when, and how many) and/or any professional extra/guest work to date (200 words max). Don't worry if you haven't had much professional orchestral experience to date – this is not required for this opportunity.
- We are accepting entries from early-career orchestral musicians for whom this experience will significantly impact their career. Please tell us why you are applying for this opportunity and why you feel it is right for you at this stage in your career/development. (200 words max)
- Please tell us about any other musical experience or interests that you think would be relevant for us to consider – for example teaching, chamber performance, composition, participation and community work etc. (200 words max)

**Applications will close at 12pm on Thursday 28 November 2024.**

## Key Information

Fellowship Musicians will receive a fee of £2000 to cover the year of work with us. This will be paid in five instalments of £400 each (paid after induction, after each patch of work, and at the end of the Fellowship). This fee is intended to cover the costs of your patches, including travel, accommodation, food and so on. Additional financial support can be provided where necessary.

This is not a full-time course nor is it employment, or considered equivalent to employment by Liverpool Philharmonic. Fellowship Musicians will be contracted as freelance musicians, solely for the duration of the patches of work in Liverpool. Fellowship Musicians must be able to demonstrate the right to work in the UK, and proof of this will be required prior to confirmation of places on the Fellowship.

## **Online Q&A**

If you have any further questions about the Fellowship scheme, including information on applying, plus audition tips and tricks, join us for a 1-hour online session. This will be held on Monday 28 October at 6pm, and you can sign up [here](#).

## **Timeline**

Open for applications	1 October 2024 – 12pm on 28 November 2024
Shortlisting	December 2024 – January 2025
Invites issued to Round 2	February 2025 (candidates will receive a minimum of 4 weeks' notice of Round 2 audition date/time)
Round 2 Live Auditions	April 2025
Appointment of cohort	May 2025
Induction	September 2025
First patch of work	Autumn 2025